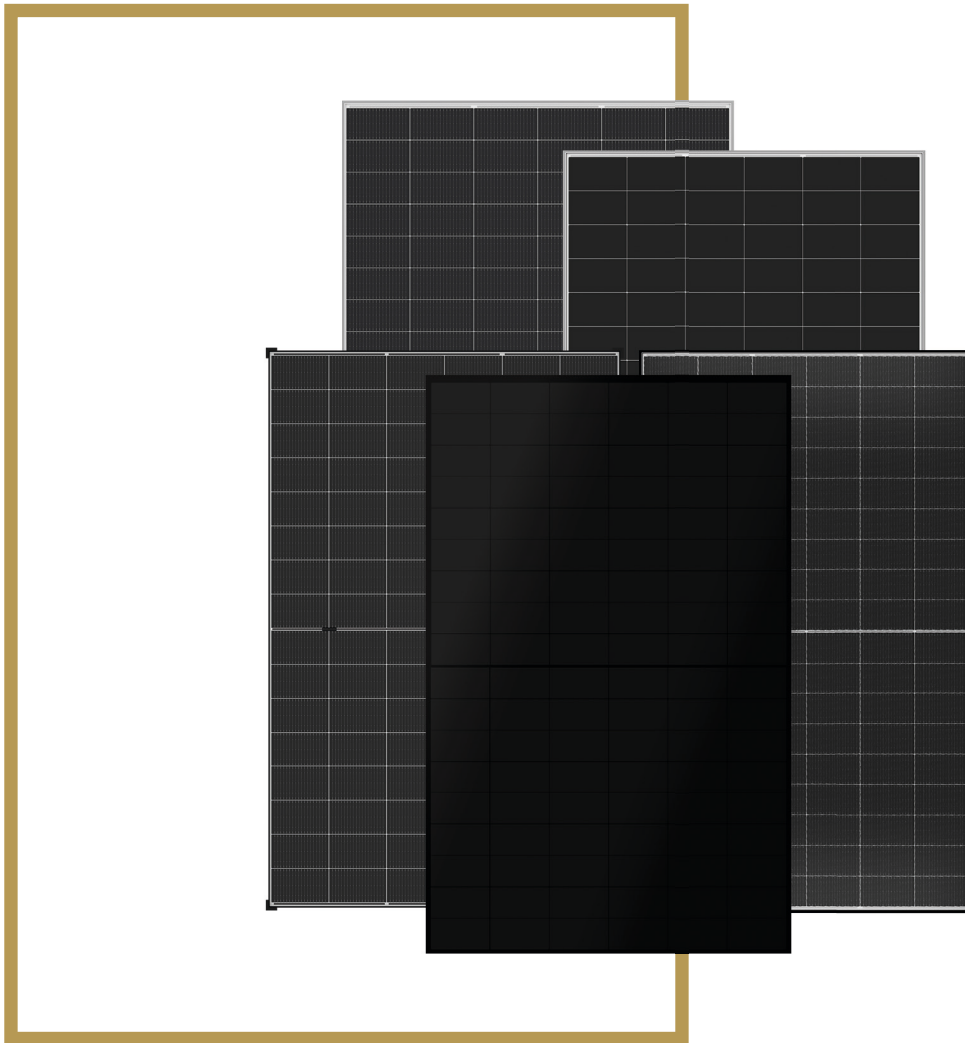


ECO LINE

PRODUCT FAMILY



Clear structure.  
Clear value proposition.



# ECO LINE PRODUCT FAMILY AT A GLANCE

## Clear structure. Clear value proposition.

The ECO LINE product family from Luxor Solar reflects a clear and market-specific structure. The ECO LINE portfolio is divided into three precisely positioned series: ECO LINE PRIME, ECO LINE PRO, ECO LINE CLASSIC.

Luxor Solar consistently focuses on premium quality, technological innovation and long-term investment security – tailored to the requirements of professional installers, project developers and investors.

The portfolio provides tailor-made module concepts for forward-looking PV projects – from high-performance standard applications to highly efficient premium installations. With this newly structured ECO LINE architecture, Luxor Solar creates a transparently positioned portfolio that covers the full spectrum of professional PV applications – from cost-driven projects, tenders and high-volume business with ECO LINE CLASSIC, to long-term reliability with ECO LINE PRO, and maximum efficiency with ECO LINE PRIME.

### ECO LINE PRIME



ECO LINE PRIME stands for technological leadership, maximum energy output, elegant module aesthetics and uncompromising high-end performance.

Highest efficiency per square meter

- + Back-Contact cell technology for outstanding efficiency
- + Premium materials & design for lasting performance
- + Exceptionally elegant, seamless appearance
- + 30-year product & performance warranty
- + High-end quality with long-term, guaranteed yields

### ECO LINE PRO



ECO LINE PRO stands for maximum reliability, reduced lifecycle risk, consistently high energy yields and long-term, value-stable investments.

30 years of reliability and performance

- + Advanced N-type technology for high efficiency
- + High-quality materials with minimal degradation
- + Consistently high yields, even under demanding conditions
- + 30-year product & performance warranty
- + Engineered for long-term, value-stable investments

### ECO LINE CLASSIC



ECO LINE CLASSIC stands for smart economics – a balanced combination of solid performance, proven quality and attractive pricing.

Cost efficiency and CAPEX optimization

- + Modern TOPCon technology
- + CAPEX optimization for cost-driven projects
- + Robust design for long-term reliable operation
- + 30-year linear performance warranty
- + German-backed warranty for long-term security



# ECO LINE PRIME

## Highest efficiency per square meter

ECO LINE PRIME is Luxor Solar’s premium solution for the highest efficiency demands – delivering maximum module output with minimal space requirements. Based on advanced Back-Contact technology, including HJT Back-Contact and TOPCon Back-Contact, all electrical contacts are relocated to the rear of the cell, maximizing light absorption, reducing electrical losses and enabling outstanding power densities.

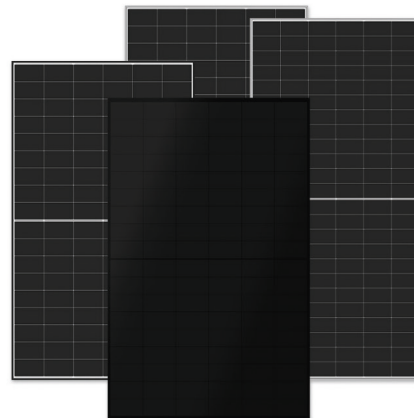
With a comprehensive 30-year product and linear performance warranty, ECO LINE PRIME combines cutting-edge technology, premium aesthetics and long-term operational security – for guaranteed high yields throughout the entire system lifetime.

The seamless, homogeneous module appearance and premium materials ensure sophisticated visual integration – ideal for architecturally demanding buildings and premium installations.

ECO LINE PRIME is the definitive solution for space-constrained systems where maximum efficiency is non-negotiable.

### MAXIMUM EFFICIENCY. NO COMPROMISE.

- + Back-Contact cell technology for outstanding efficiency
- + Premium materials & design for lasting performance
- + Exceptionally elegant, seamless appearance
- + 30-year product & performance warranty
- + High-end quality with long-term, guaranteed yields



<b>Module Series</b>	ECO LINE PRIME
<b>Key Advantages</b>	Highest efficiency per square meter
<b>Cell Type</b>	TOPCon
<b>Technology</b>	Back-Contact
<b>Product Guarantee</b>	30 years
<b>Linear Performance Guarantee</b>	30 years
<b>Module Variants</b>	PURE BLACK, BLACK WHITE, SILVER WHITE



# ECO LINE PRO

## 30 years of reliability and performance

ECO LINE PRO sets the benchmark for long-term reliability and sustained yield performance. Combining the latest N-type cell technologies with superior component quality and elevated rated power, this product family is built for projects where longevity and operational security are the decisive factors.

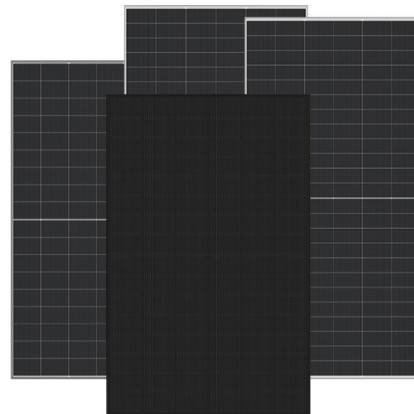
With a comprehensive 30-year product and linear performance warranty, ECO LINE PRO delivers the highest level of investment security and long-term planning certainty.

The robust module architecture and carefully selected materials ensure consistently reliable performance – even under the most demanding conditions.

Specifically engineered to reduce lifecycle risks and maximize operational reliability, ECO LINE PRO delivers sustainable returns throughout the entire system lifetime.

### BUILT FOR DURABILITY. DESIGNED FOR LONG-TERM VALUE.

- + Advanced N-type technology for high efficiency
- + High-quality materials with minimal degradation
- + Consistently high yields, even under demanding conditions
- + 30-year product & performance warranty
- + Engineered for long-term, value-stable investments



<b>Module Series</b>	ECO LINE PRO
<b>Key Advantages</b>	30 years of reliability and performance
<b>Cell Type</b>	TOPCon, HJT
<b>Technology</b>	standard Z-soldering
<b>Product Guarantee</b>	30 years
<b>Linear Performance Guarantee</b>	30 years
<b>Module Variants</b>	FULLBLACK, BLACK WHITE, BLACK TRANSPARENT, FRAMELESS, SILVER WHITE, NON-REFLECT, SECURE (abZ)



# ECO LINE CLASSIC

## Cost efficiency and CAPEX optimization

Designed for maximum investment efficiency, ECO LINE CLASSIC is Luxor Solar’s dedicated solution for price-sensitive projects, tenders and high-volume business. Based on modern TOPCon technology with proven glass-glass construction, this product family delivers reliable performance at an optimized cost level – where competitive system costs and CAPEX\* optimization are the decisive factors.

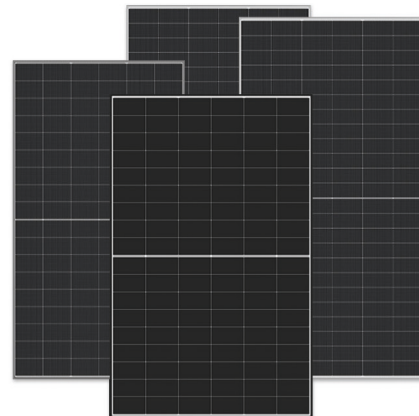
With a 15-year product warranty and a 30-year linear performance warranty, secured by German warranty standards, ECO LINE CLASSIC ensures long-term planning certainty and dependable energy yields.

The robust module design and proven quality ensure stable output and reliable operation over many years.

ECO LINE CLASSIC is the ideal choice for large-scale installations where economic efficiency is paramount.

### SMART ECONOMICS. CLEAR RESPONSIBILITY.

- + Modern TOPCon technology
- + CAPEX optimization for cost-driven projects
- + Robust design for long-term reliable operation
- + 30-year linear performance warranty
- + German-backed warranty for long-term security



<b>Module Series</b>	ECO LINE CLASSIC
<b>Key Advantages</b>	Cost efficiency and CAPEX optimization
<b>Cell Type</b>	TOPCon
<b>Technology</b>	standard Z-soldering
<b>Product Guarantee</b>	15 years
<b>Linear Performance Guarantee</b>	30 years
<b>Module Variants</b>	BLACK WHITE, SILVER WHITE



**Luxor Solar GmbH**

Kornbergstraße 29 | 70176 Stuttgart | Germany  
T +49.711.88 888-999 | F +49.711.88 888-911  
info@luxor-solar.com | www.luxor.solar

© 2026